

# ATLAS

## Material Handler 250MH



-  **23 - 25 t**
-  **116 kW (158 hp)**
-  **10.25 - 12.65 m**



FAST. RELIABLE. VERSATILE.

# 250MH

## Technical Information

### ENGINE

Power according to ISO 9249.....116 kW (158 PS)	Cylinder capacity.....6700 cm <sup>3</sup>	Air filter .....Dry air filter
RPM.....1800/min	Number of cylinders.....6	Battery..... 2 x 12 V / 100 Ah
Make.....Cummins QSB 6.7 (Stage 3B)	Borehole/lift.....101/126	Alternator ..... 24 V / 70 Ah
Design.....Turbocharger / intercooler	Cooling system.....Water-cooled	Starter..... 24 V / 3.2 kW

### HYDRAULIC SYSTEM

• 2 Load limit-controlled high-performance	• Suction valves for all work functions	• 2 additional circuits for additional consumer loads possible
• Dual-circuit hydraulic system	• Load-retaining and fine-drop valve in lifting circuit	• Max. oil flow.....380 l/min
• 7 standard consumer loads in one control block	• Pump flow control	• Max. operating pressure.....340 (370) bar
• Sensitive, proportional, independent control	• Grab and grab-rotating function	• <b>Operating modes:</b> 3 pre-programmed modes (Fine, Eco, Power)
• Primary and secondary protection against overload	• Pipe-break protection valves for lifting cylinders	• Proportional grab turning

### SWING ASSEMBLY

• Swing motor:	Axial piston motor with priority valve	• Max. swing speed.....11/min
• Swing gear:	Planetary transmission	• Swing torque.....63.2kNm
• Swing brakes:	Automatic multidisc brake	

### TRACTION DRIVE AND BRAKES

• Variable displacement motor	• Maximum speed .....20 km/h	• Max. gradeability .....55%
• Power-shift transmission	• Terrain speed .....5 km/h	• Dual circuit brake system .....Multi-disc
• Double-acting brake valve	• Crawling speed .....1 km/h	• Parking brake .....Multi-disc
• Driving direction pre-selection via switch in joystick	• Tractive force .....91.8 kN	

### UNDERCARRIAGE

• 40 t special excavator axles	• Steering axle with automatic oscillating axle blocking	• 8 tyres .....10.00 - 20
--------------------------------	--	---------------------------

### FILL CAPACITIES

• Fuel tank ..... 389 Liter	• Engine oil ..... 20 Liter	• Hydraulics system.....400 Liter
• Cooling system ..... 42 Liter	• Hydraulic tank ..... 216 Liter	

### DRIVER'S CAB

• Meets latest safety standards	<b>CONTROL:</b>	<b>CLIMATE CONTROL:</b>
• Extra large entry zone	• Ergonomic joysticks	• Air conditioning with Climatronic
• Spacious leg room	• Slim steering column, height and tilt adjustable	• Very good air distribution through optimally arranged nozzles
• Excellent circumferential visibility	• Clear and concise arrangement of control switches	
• Preparation for radio installation with mute function		<b>SOUND LEVELS:</b>
<b>DRIVER'S SEAT:</b>	<b>MONITORING:</b>	• ISO6396 (L <sub>pA</sub> ) in driver's cab .....73 dB(A)
• Air-cushioned comfort seat (optional seat heating)	• Operating data display screen	• 2000/14EG (L <sub>wA</sub> ) ambience level .....101 dB(A)
• Arm rests and lumbar support	• Automatic system for monitoring, warning and storage of data	
• Seat adjustable separately from console		

## Equipment

### OPERATING HEIGHTS

	LOADING BOOM 6.20 m (C24.5i)	LOADING BOOM 6.20 m (C24.5i)	LOADING BOOM 6.80 m (C24.6i)
	Stick 4.80 m (D21.15i)	Stick 4.80 m (D21.15is)	Stick 5.30 m (D21.16i)
DB / outriggers	23 t	23 t	23.4 t
4 outriggers	23.2 t	23.2 t	23.6 t

Operating weight with driver, solid rubber tyres, completely filled implement and 1.0 t for attachments and 1.4 t for lift-cab (option)

### EQUIPMENT

#### BASIC DEVICE ATLAS 250MH

- 250MH material handler with DB\* on steering axle, double outrigger support on steering axle and 2 lifting cylinders (A25.35)
- 250MH material handler with quadruple outrigger support and 2 lifting cylinders (A25.39)

\*DB - Dozer blade

#### Standard equipment:

- Rear view security camera with 5" LCD-colour monitor

#### Engine:

- Automatic idle
- Diesel pre-filter
- Engine monitoring

- Seat adjustable separately from console

#### Mono Booms:

- Loading boom 6.20 m (C24.5i)
- Loading boom 6.80 m (C24.6i)

#### Hydraulics:

- Grab and grab-rotating function
- Accumulator for emergency lowering of the arm system
- Pipe break protection valves for lifting cylinders
- Overload warning device
- Cylinder end-position damping

- Heat-absorbing glass, tinted windows
- Automotive drive and cruise control
- Operating data screen display
- Ready for electric cooling box
- Different options for storage, compartment for documents
- Bottle holder

#### Mono Sticks:

- Stick 4.80 m (D21.15is)
- Stick 4.80 m (D21.15i)
- Stick 5.30 m (D21.16i)

#### Equipment:

- Combined lubricating points for swing bearing and arm equipment

#### Undercarriage:

- Power-shift transmission
- Wet disc brakes
- Tool box in the undercarriage

#### Cab:

- Air-conditioning
- Preparation for radio installation with mute function
- Slim steering column, height and tilt adjustable

### ADDITIONAL EQUIPMENT

#### Engine:

- Refueling pump
- Auxiliary heating
- Cold startup assistance

#### Equipment:

- Automatically controlled and monitored electric central lubrication system

- Lift-Cab (to 2.50 m drive up)

- Cab elevation 1.2 m /0.6 m

- Electric cooling box

- Working lights, LED

#### Cab:

- Cab protection guard
- Beacon light

#### Undercarriage:

- Vollgummireifen

#### Hydraulics:

- Hydr. adaptor kit, switch supports pairwise in front and back
- Biodegradable oil

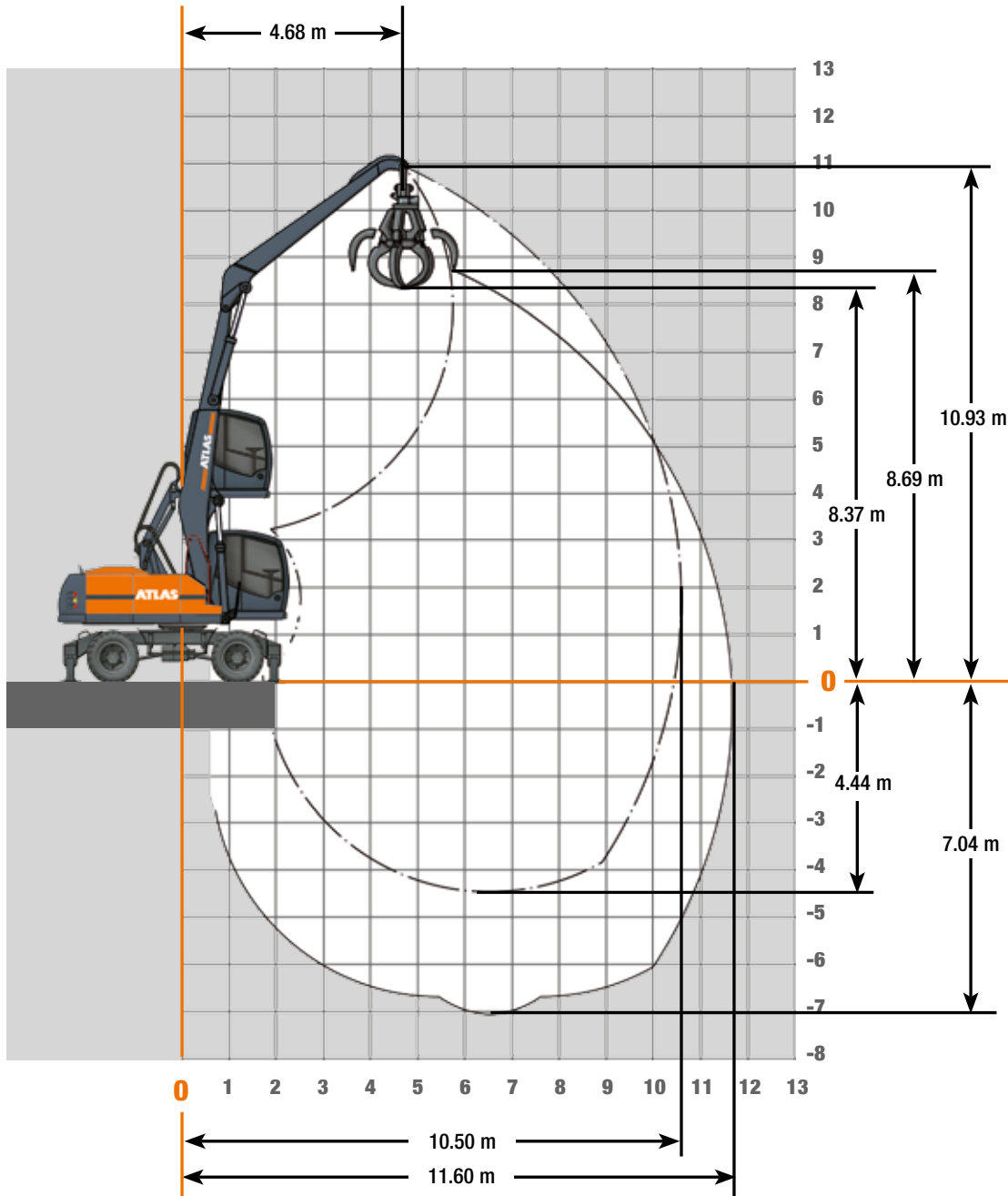
- Heated driver's seat
- GPS/GSM telemetric system for monitoring of operating data, consumption, position
- Radio/CD/MP3, front AUX in, USB

Other special equipment: see price list

### ATTACHMENTS

- Clamshell grab
- Load hook
- Log grab
- Orange peel grab
- Load lifting magnet

## Work areas Loading boom 6.20 m (C24.5i) and stick 4.80 m (D21.15i)



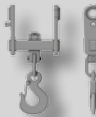
## Lifting Capacities, Loading boom 6.20 m (C24.5i) and Stick 4.80 m (D21.15i)

### Lifting Capacities Loading boom 6.20 m (C24.5i) with stick 4.80 m (D21.15i). Max. reach 11.60 m

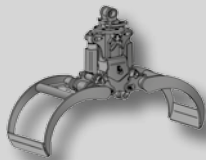
HEIGHT		3.0 m		4.5 m		6.0 m		7.5 m		9.0 m	
		FRONT	LATERAL	FRONT	LATERAL	FRONT	LATERAL	FRONT	LATERAL	FRONT	LATERAL
9.0 m	Claws hi / vo lowered					6.2*	6.2*	5.4*	5.4*		
	Claws hi / vo raised in back					5.7	4.7	3.9	3.3		
7.5 m	Claws hi / vo lowered					6.1*	6.1*	5.4*	5.4*	4.7*	4.2
	Claws hi / vo raised in back					5.7	4.7	4	3.3	3	2.4
6.0 m	Claws hi / vo lowered					6.3*	6.3*	5.4*	5.4*	4.7*	4.2
	Claws hi / vo raised in back					5.6	4.6	4	3.3	3	2.4
4.5 m	Claws hi / vo lowered			8.4*	8.4*	6.7*	6.7*	5.6*	5.5	4.8*	4.2
	Claws hi / vo raised in back			8.4*	6.9	5.4	4.4	3.9	3.2	2.9	2.4
3.0 m	Claws hi / vo lowered	14.7*	14.7*	9.6*	9.6*	7.2*	7.2*	5.8*	5.4	4.8*	4.1
	Claws hi / vo raised in back	14.7*	11.8	7.9	6.3	5.2	4.2	3.7	3	2.8	2.3
1.5 m	Claws hi / vo lowered	2.8*	2.8*	10.4*	10.4*	7.5*	7.3	5.8*	5.2	4.7*	4
	Claws hi / vo raised in back	2.8*	2.8*	7.3	5.8	4.9	3.9	3.6	2.9	2.8	2.3
0 m	Claws hi / vo lowered			10*	10*	7.3*	7	5.6*	5.1	4.4*	3.9
	Claws hi / vo raised in back			6.9	5.4	4.7	3.7	3.5	2.8	2.7	2.2
- 1.5 m	Claws hi / vo lowered			8.6*	8.6*	6.6*	6.6*	5*	5	3.8*	3.8*
	Claws hi / vo raised in back			6.8	5.3	4.6	3.6	3.4	2.7	2.7	2.1
- 3.0 m	Claws hi / vo lowered			6.5*	6.5*	5.2*	5.2*	4*	4*	2.8*	2.8*
	Claws hi / vo raised in back			6.5*	5.3	4.5	3.6	3.4	2.7	2.7	2.2

The specified max. loading capacities in tonnes include a stability of 33% or are calculated at 87% of the hydraulic lifting power, as per ISO10567. These values are applicable at the tip of the arm (without Bucket tipping cylinder, system of redirect levers) with optimum positioning of the corresponding arm system and with the pressure switched on. Weights of attached load carrying accessories (grab, magnet, load hook, etc.) are not included with the load carrying values. \* Value limited due to hydraulics.

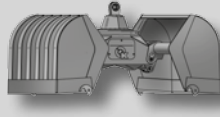
### Attachments



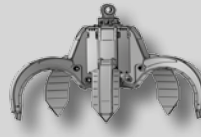
Load hook



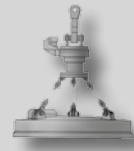
Log grab



Clamshell grab

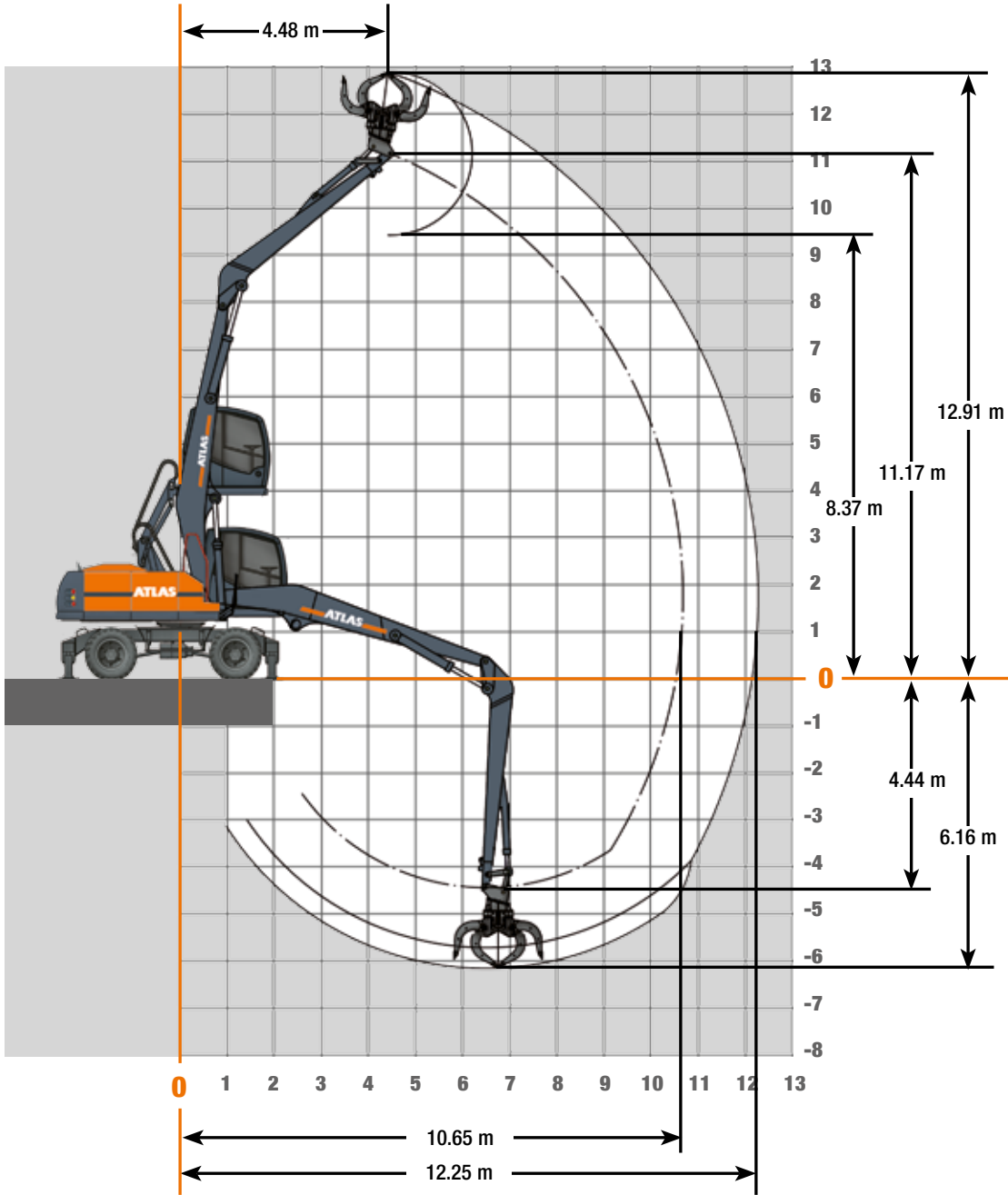


Orange peel grab



Load lifting magnet

## Work areas Loading boom 6.20 m (C24.5i) and Stick 4.80 m (D21.15is)



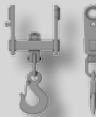
## Lifting Capacities Loading boom 6.20 m (C24.5i) and Stick 4.80 m (D21.15is)

### Lifting Capacities Loading boom 6.20 m (C24.5i) with stick 4.80 m (D21.15is). Max. reach 12.30 m

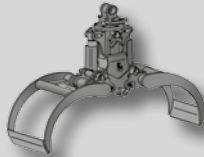
HEIGHT		3.0 m		4.5 m		6.0 m		7.5 m		9.0 m	
		FRONT	LATERAL	FRONT	LATERAL	FRONT	LATERAL	FRONT	LATERAL	FRONT	LATERAL
12.0 m	Claws hi / vo lowered										
	Claws hi / vo raised in back										
10.5 m	Claws hi / vo lowered										
	Claws hi / vo raised in back										
9.0 m	Claws hi / vo lowered					6.2*	6.2*	5.4*	5.4*		
	Claws hi / vo raised in back					5.6	4.7	3.9	3.3		
7.5 m	Claws hi / vo lowered					6.1*	6.1*	5.4*	5.4*	4.7*	4.2
	Claws hi / vo raised in back					5.7	4.7	4	3.3	3	2.4
6.0 m	Claws hi / vo lowered					6.3*	6.3*	5.4*	5.4*	4.7*	4.2
	Claws hi / vo raised in back					5.6	4.6	4	3.3	3	2.4
4.5 m	Claws hi / vo lowered			8.4*	8.4*	6.7*	6.7*	5.6*	5.5	4.8*	4.2
	Claws hi / vo raised in back			8.4*	6.9	5.4	4.4	3.9	3.1	2.4	3
3.0 m	Claws hi / vo lowered	14.8*	14.8*	9.6*	9.6*	7.2*	7.2*	5.8*	5.4	4.6*	4.1
	Claws hi / vo raised in back	14.8*	11.8	7.9	6.4	5.2	4.2	3.7	3	2.8	2.3
1.5 m	Claws hi / vo lowered	2.9*	2.9*	10.4*	10.4*	7.5*	7.3	5.9*	5.2	4.7*	4
	Claws hi / vo raised in back	2.9*	2.9*	7.4	5.8	4.9	3.9	3.6	2.9	2.8	2.2
0 m	Claws hi / vo lowered			10*	10*	7.4*	7.1	5.7*	5.1	4.4*	4
	Claws hi / vo raised in back			7	5.5	4.7	3.7	3.5	2.8	2.7	2.2
-1.5 m	Claws hi / vo lowered			8.7*	8.7*	6.6*	6.6*	5.1*	5	3.8*	3.8*
	Claws hi / vo raised in back			6.8	5.3	4.6	3.7	3.4	2.8	2.1	2.7
-3.0 m	Claws hi / vo lowered			6.5*	6.5*	5.2*	5.2*	4*	4*	2.8*	2.8*
	Claws hi / vo raised in back			6.5*	5.3	4.6	3.6	3.4	2.7	2.7	2.2
-4.5 m	Claws hi / vo lowered										
	Claws hi / vo raised in back										

The specified max. loading capacities in tonnes include a stability of 33% or are calculated at 87% of the hydraulic lifting power, as per ISO10567. These values are applicable at the tip of the arm (without Bucket tipping cylinder, system of redirect levers) with optimum positioning of the corresponding arm system and with the pressure switched on. Weights of attached load carrying accessories (grab, magnet, load hook, etc.) are not included with the load carrying values. \* Value limited due to hydraulics.

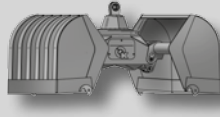
### Attachments



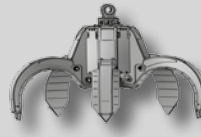
Load hook



Log grab



Clamshell grab



Orange peel grab



Load lifting magnet

## Lifting Capacities Loading boom 6.80 m (C24.6i) and Stick 5.30 m (D21.16i)

### Lifting Capacities Loading boom 6.80 m (C24.6i) with stick 5.30 m (D21.16i). Max. reach 12.65 m

HEIGHT		3.0 m		4.5 m		6.0 m		7.5 m		9.0 m		10.5 m	
		FRONT	LATERAL	FRONT	LATERAL	FRONT	LATERAL	FRONT	LATERAL	FRONT	LATERAL	FRONT	LATERAL
12.0 m	Claws hi / vo lowered												
	Claws hi / vo raised in back												
10.5 m	Claws hi / vo lowered					5.9*	5.9*						
	Claws hi / vo raised in back					5.7	4.7						
9.0 m	Claws hi / vo lowered							5*	5*				
	Claws hi / vo raised in back							4	3.3				
7.5 m	Claws hi / vo lowered							5*	5*	4.4*	4.3		
	Claws hi / vo raised in back							4	3.3	3	2.5		
6.0 m	Claws hi / vo lowered					6*	6*	5.2*	5.2*	4.5*	4.2	3.9*	3.3
	Claws hi / vo raised in back					5.6	4.6	4	3.3	3	2.4	2.3	1.9
4.5 m	Claws hi / vo lowered			8.2*	8.2*	6.5*	6.5*	5.4*	5.4*	4.6*	4.2	3.9*	3.3
	Claws hi / vo raised in back			8.2*	6.9	5.4	4.4	3.8	3.2	2.9	2.4	2.3	1.8
3.0 m	Claws hi / vo lowered	14.7*	14.7*	9.4*	9.4*	7*	7*	5.6*	5.3	4.6*	4	3.9*	3.2
	Claws hi / vo raised in back	14.7*	11.6	7.9	6.3	5.1	4.1	3.7	3	2.8	2.3	2.2	1.8
1.5 m	Claws hi / vo lowered			10.1*	10.1*	7.3*	7.2	5.7*	5.1	4.6*	3.9	3.6*	3.2
	Claws hi / vo raised in back			7.2	5.6	4.8	3.8	3.5	2.8	2.7	2.2	2.2	1.7
0 m	Claws hi / vo lowered			9.8*	9.8*	7.2*	6.9	5.6*	5	4.4*	3.9	3.5*	3.1
	Claws hi / vo raised in back			6.7	5.2	4.5	3.6	3.4	2.7	2.6	2	2.1	1.7
- 1.5 m	Claws hi / vo lowered			8.5*	8.5*	6.5*	6.5*	5*	4.9	4*	3.9		
	Claws hi / vo raised in back			6.6	5	4.4	3.5	3.3	2.6	2.6	2		
- 3.0 m	Claws hi / vo lowered			6.6*	6.6*	5.4*	5.4*	4.2*	4.2*	3.2*	3.2*		
	Claws hi / vo raised in back			6.5	5	4.3	3.4	3.2	2.6	2.5	2		
- 4.5 m	Claws hi / vo lowered					3.7*	3.7*	3*	3*	2*	2*		
	Claws hi / vo raised in back					3.7*	3.4	3*	2.6	2*	2		

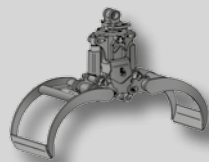
The specified max. loading capacities in tonnes include a stability of 33% or are calculated at 87% of the hydraulic lifting power, as per ISO10567.

These values are applicable at the tip of the arm (without Bucket tipping cylinder, system of redirect levers) with optimum positioning of the corresponding arm system and with the pressure switched on. Weights of attached load carrying accessories (grab, magnet, load hook, etc.) are not included with the load carrying values. \* Value limited due to hydraulics.

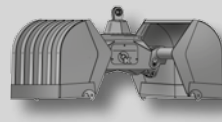
### Attachments



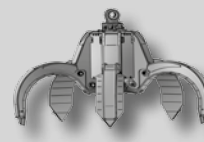
Load hook



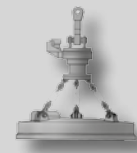
Log grab



Clamshell grab



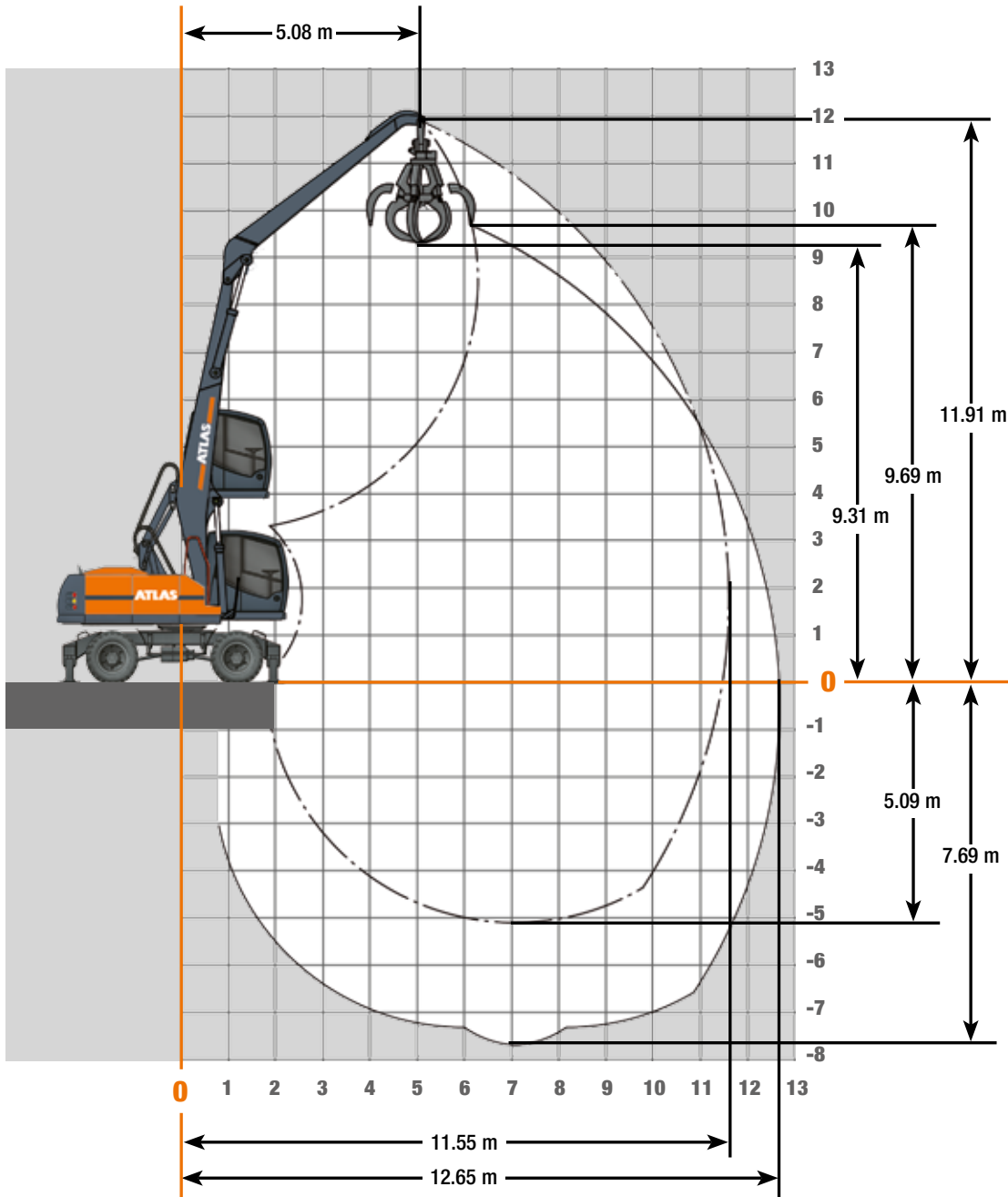
Orange peel grab



Load lifting magnet

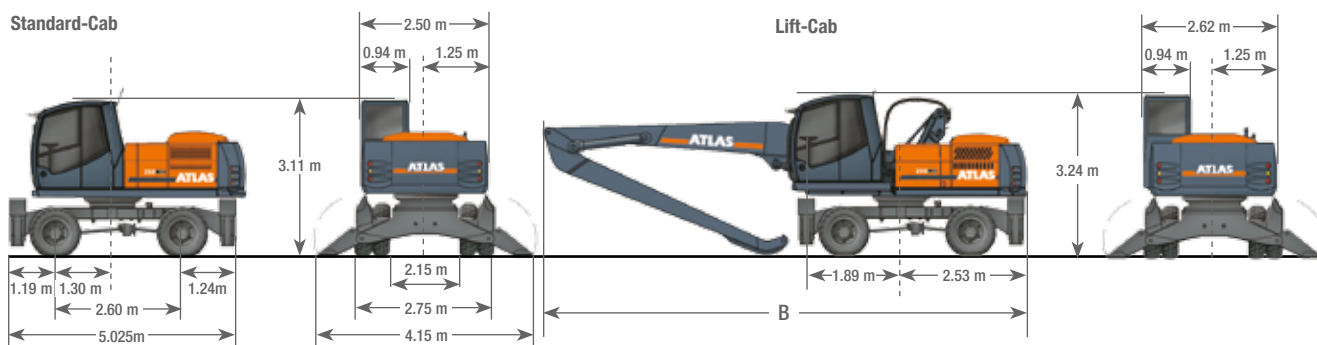


## Work areas Loading boom 6.80 m (C24.6i) and Stick 5.30 m (D21.16i)



# ATLAS

## Dimensions

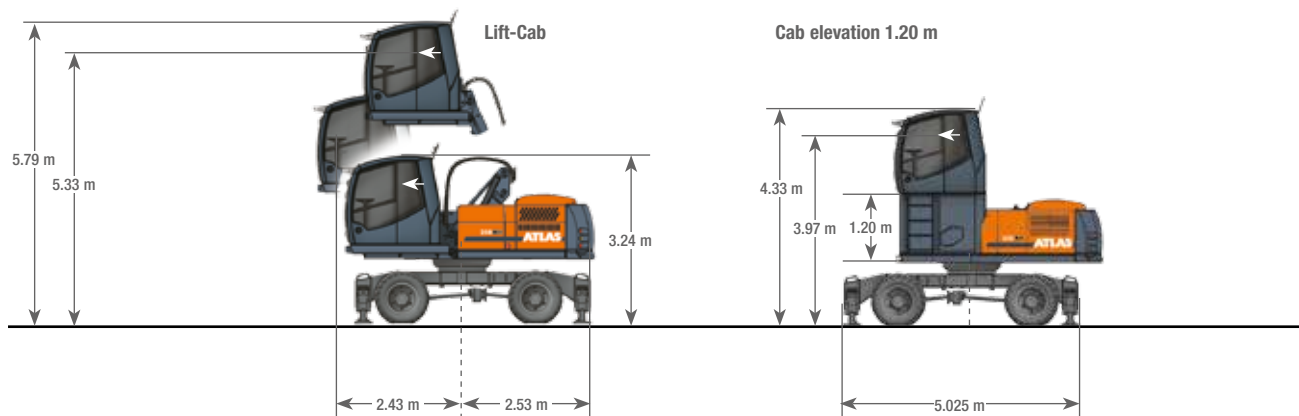


### A TRANSPORT HEIGHT

Loading boom 6.20 m with Stick 4.80 m	3.24 m
Loading boom 6.80 m with Stick 5.30 m	3.24 m
Adjustable Boom 1.95 m   4.23 m with stick 2.65 m	3.24 m

### B TRANSPORT LENGTH

Loading boom 6.20 with Stick 4.80 m	9.30 m
Loading boom 6.80 with Stick 5.30 m	9.88 m



Further cabin versions on demand.

[www.atlasgmbh.com](http://www.atlasgmbh.com)

**ATLAS Maschinen GmbH**  
 EXCAVATORS  
 Atlasstrasse 6  
 27777 Ganderkesee, Germany  
 T: +49 (0) 4222 954 0  
 F: +49 (0) 4222 954 343  
 info@atlasgmbh.com

250MH-EN (1) Effective date: November 2013. Product specifications and prices are subject to change without notice or obligation. The photographs and/or drawings in this document are for illustrative purposes only. Refer to the appropriate Operator's Manual for instructions on the proper use of this equipment. Failure to follow the appropriate Operator's Manual when using our equipment or to otherwise act irresponsibly may result in serious injury or death. The only warranty applicable to our equipment is the standard written warranty applicable to the particular product and sale and Atlas makes no other warranty, express or implied. The only warranty applicable to our equipment is the standard written warranty applicable to the particular product and sale and Atlas makes no other warranty, express or implied. Products and services listed may be trademarks, service marks or trade-names of Atlas Maschinen GmbH and/or its subsidiaries. All rights are reserved. Atlas® is a registered trademark of Atlas Maschinen GmbH. Copyright © 2012 Atlas Maschinen GmbH.